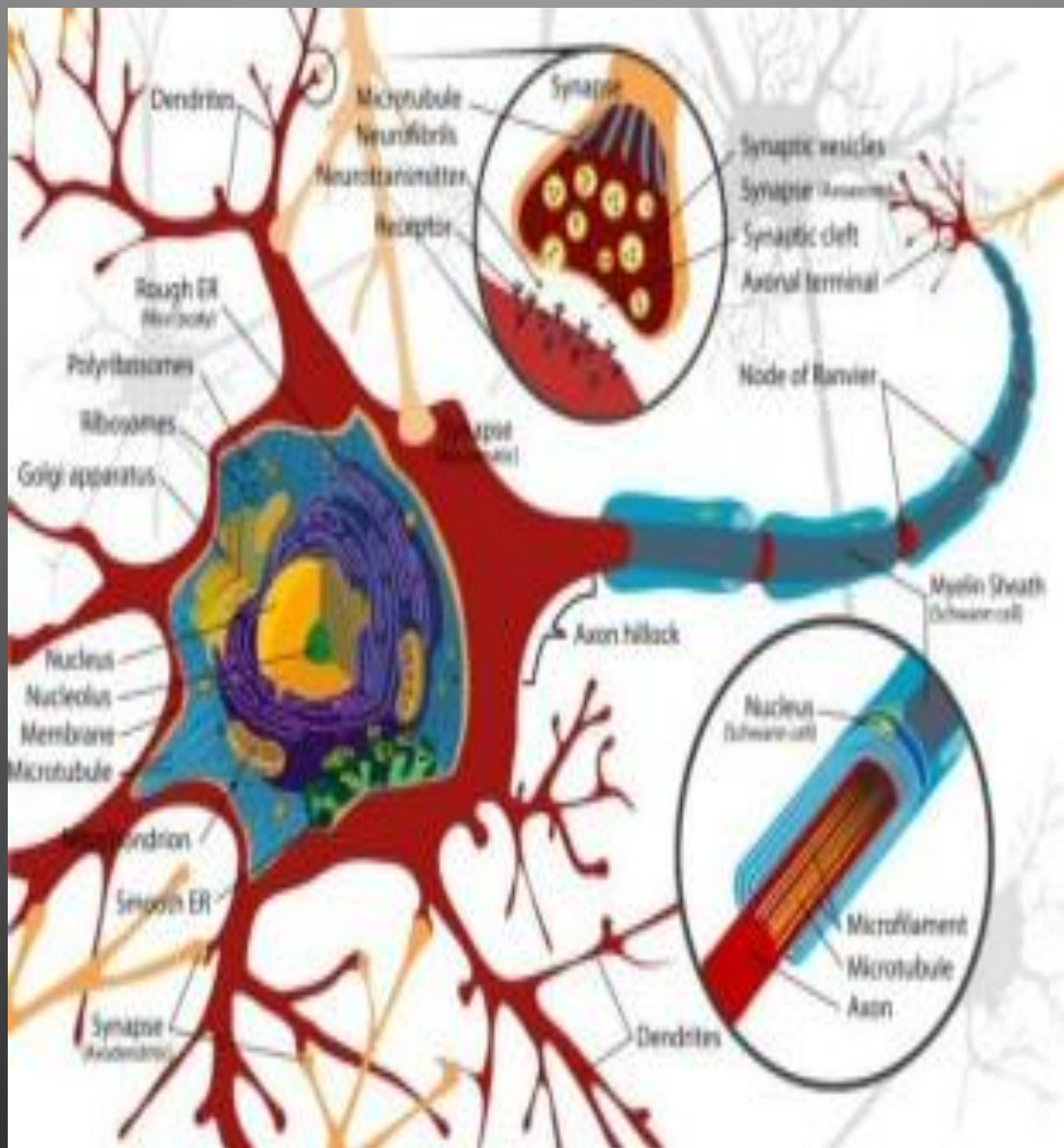
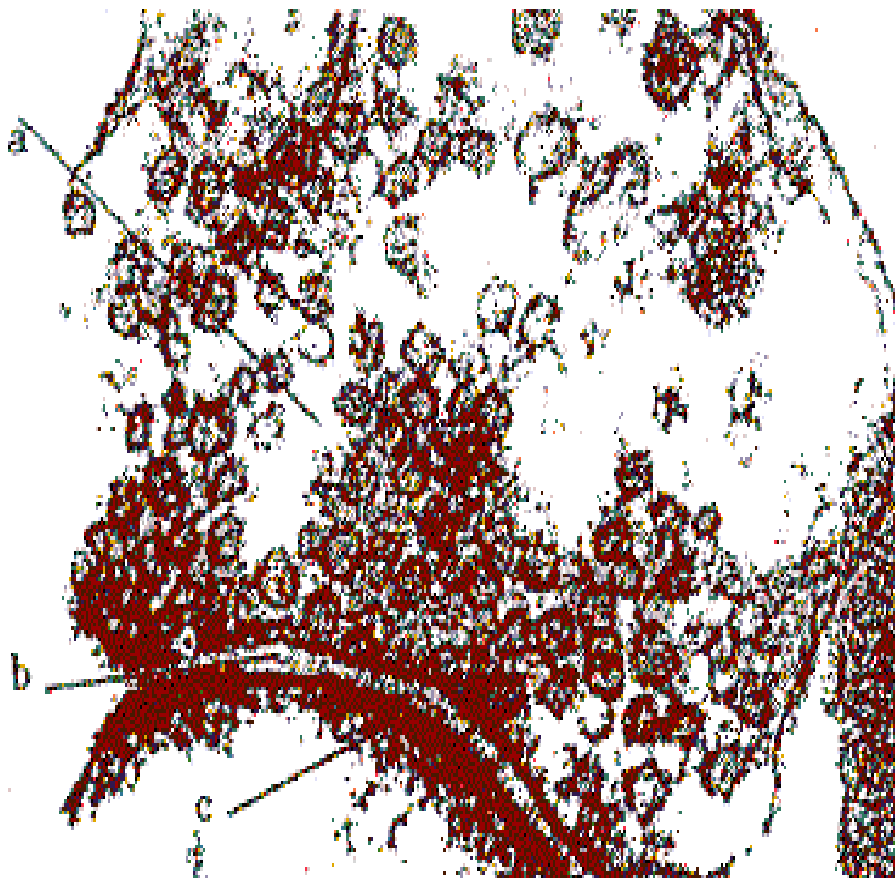


PSYCHOPHARMACOLOGY

R.H. TOMPKINS, MA, PA-C



The Synapse



Electron microscope photo of a synapse

- a. presynaptic neuron
- b. syntaptic gap
- d. postsynaptic neuron

SSRI'S

- PROZAC (fluoxetine) 20mg to 40mg
- ZOLOFT (sertraline) 25mg to 200 mg
- PAXIL (paroxetine) 10mg to 40mg
- CELEXA (citalopram) 10mg to 40mg
- LEXAPRO (escitalopram) 10mg to 20 mg

SSRI/SNRI

- EFFEXOR (venlafaxine) 37.5mg to 375mg
- CYMBALTA (duloxetine) 30mg to 120mg
- PRISTIQ (desvenlafaxine) 50 mg to 100 mg
- VIIBRYD (vilazodone) 20 mg to 40 mg
- New SSRI + 5-HT 1A

BEHAVIOR THERAPY



ATYPICALS

- Wellbutrin (bupropion) 75 mg to 400 mg
- Aplenzin (bupropion HBr) 174 mg to 522 Mg

ANTIPSYCHOTICS/ MOOD STABILIZERS

- Abilify (aripiprazole) 2.5mg to 30 mg
- Seroquel (quetiapine) 12.5 mg to 800 mg
- Zyprexa (olanzapine) .5 mg to 15 mg
- Risperidone (risperidal) .25 mg to 15 mg

MOOD STABILIZERS

- Lithium 300 mg to ????
3,000+mg
- Depakote (valproate) 250 mg to
2,000 mg
- **Carbamazepine, Equatro, Epitol,
Carbatrol**
- Lamotrigine, Lamictal, 100 mg to
300 mg

EARLY INTERVENTION



PSYCHOSTIMULANTS

- Ritalin, Metadate, Concerta, Daytrana
- (methylphenidate HCL) 5 mg to 72 mg
- Adderal (mixed amphetamine salts) 5 mg to 60 mg
- Vyvanse (Lisdexamfetamine) 20 mg to 70 mg



NON-STIMULANT TX ADHD

- Strattera (atomoxetine) 25 mg to 120 mg
- Intuvia, Tenex (guanfacine) Alpha 2, adrenergic receptor agonist

BENZODIAZEPINES

- Valium (diazepam) 2.5 to 15 mg
- Xanax (alprazolam) .25 mg to 2 mg
- Ativan (lorazepam) .5 to 5 mg
- Klonopin (clonazepam) .5 to 4 mg



SLEEPERS/SEDATION

- Ambien (zolpidem) 5 mg to 12.5 mg (CR)
- Lunesta (eszopiclone) 2 mg to 3 mg
- Trazodone (Desyrel) 25 mg to 300 mg
- Remeron (mirtazapine) 7.5 mg to 45 mg
- Melatonin OTC 3 mg to 6 mg



The End